

A thick orange line that spirals downwards from the top left, forming a helix shape that wraps around the text.

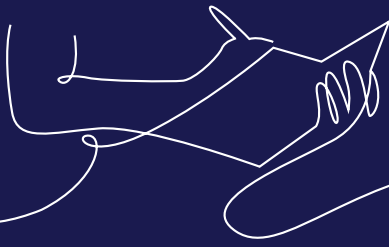
# Crowdhelix

COLLABORATION INTELLIGENCE

# Sign up to the CrowdHelix Collaboration Platform

Interested in applying to Horizon Europe for EU or global funding opportunities?

Consortia building just got much easier



**As a CrowdHelix member organisation, you have access to the collaboration intelligence platform's international networks of top-level researchers and state of the art innovators from: universities, research organisations, SMEs, and multinational corporations actively seeking funding opportunities.**

CrowdHelix facilitates building and strengthening your network, preparing for EU and global funding opportunities as well as upcoming Horizon Europe deadlines.

The platform is designed to enable you to quickly build strong, diverse, impactful collaborative partnerships, and we encourage you to profile yourself, your expertise, your research group and your research and innovation strategies.

**Start by registering at:**  
[platform.crowdhelix.com/register](https://platform.crowdhelix.com/register)

Contact the CrowdHelix team with any questions:  
[crowdhelix.com/contact](https://crowdhelix.com/contact)

# How to unlock the potential of Crowdhelix

**Crowdhelix forges collaborative links between excellent researchers and innovating companies worldwide. Here's how we can help you promote the platform from within your organisation:**



## ELEVATE YOUR VISIBILITY

- Unlock the potential of our platform's AI matchmaking capabilities with our informative webinars.
- Join us for a concise 60-minute session designed to spotlight your organisation and enhance its presence on the Crowdhelix platform.
- Explore collaborative research opportunities and amplify your institution's reach.



## POWER OF SOCIAL MEDIA

- Follow and tag Crowdhelix on LinkedIn and X.
- Introduce us to your followers and encourage them to sign up to the Crowdhelix platform.
- Share tags with us so we can include the appropriate networks in our messaging.
- Our social media messaging and community is richly informational with up-to-date events and announcements.



## ENHANCE YOUR INTERNAL COMMUNICATIONS

- Ensure your communities stay informed and in the loop.
- Incorporate our promotional materials into your newsletter or blog.
- Include timely updates on platform developments, upcoming events and collaboration opportunities.



## KNOWLEDGE TRANSFER PRESENTATIONS

- Empower your audiences at events.
- Host an engaging session on Horizon Europe or a targeted workshop focused on specific calls.
- We are eager to contribute as speakers, introducing Crowdhelix to your audience and adding value to your networks.



## CROWDHELIX IS AN IMPACT PARTNER

- Crowdhelix participates in projects to facilitate community engagement, support exploitation and ensure project sustainability and impact continuity.
- Your Impact Acceleration Manager (IAM) possesses a deep understanding of the innovation landscape with focused expertise, bringing a wealth of knowledge and experience to the table and is there to assist and guide.



## FLAG RELEVANT HELIXES TO SPECIFIC INSTITUTES

- Invite individuals from specific research groups to sign up to the Crowdhelix platform to follow relevant thematic Helixes.
- Profile their group under your organisation's umbrella.



For more information on how to promote Crowdhelix inside your institution, please contact :

Paul McKenna, Head of Membership Operations.

Email: [paul.mckenna@crowdhelix.uk](mailto:paul.mckenna@crowdhelix.uk)